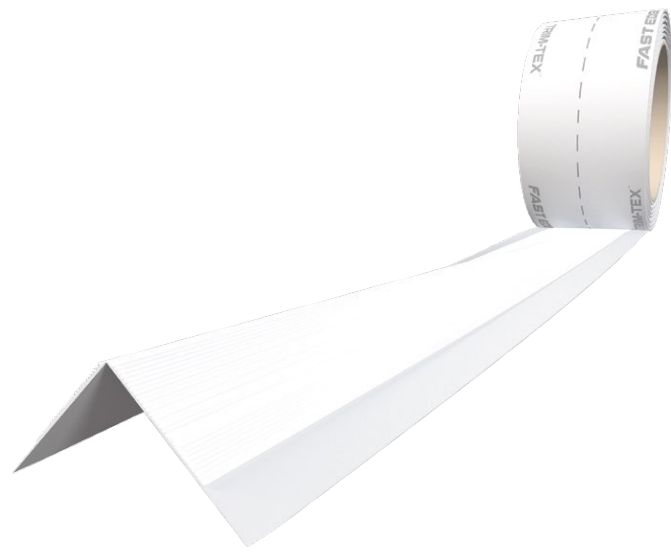


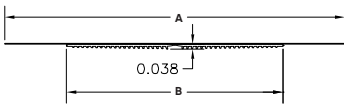
Fast Edge Rolls

Fast Edge – the next generation of corner bead, known far and wide for having the quickest installation on the market while using the least amount of mud – is now available in a convenient, highly flexible rolled form in four widths: 2.75", 3.25", 3.75" and 4.50". Tackle off-angle inside and outside corners faster than ever, while our patented mud locks featured on the bead's paper-covered vinyl core provide unmatched bond strength and durability.

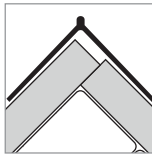


Installation Guide

Technical Specs



Setback: Standard



Scan Below for
Installation Video



Before Installation:

Measure, cut and dry fit the bead.

Step 1:

Use all-purpose to mud set in place.

Step 2:

Place Fast Edge Roll in corner and adjust it, if necessary. Wipe off excess mud.

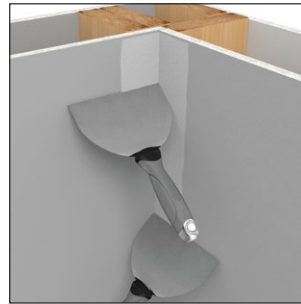
Step 3:

Apply skim coat to the edges of the corner. Final coat where necessary.

Note:

Pre-fold once along the center line to use on outside corners.

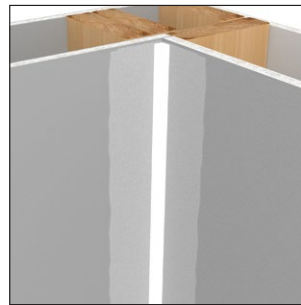
Step 1:



Step 2:



Step 3:



Note:

