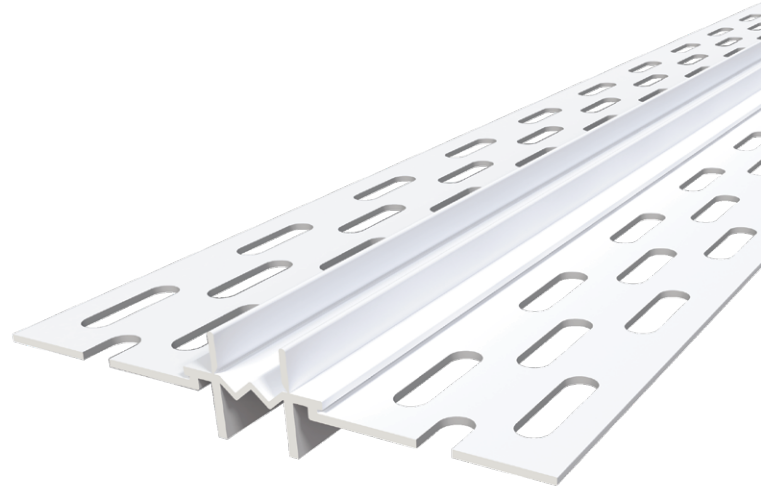


Hideaway Expansion Submittal Sheet



STOCK NO.	LENGTH	PCS. PER BOX
2710	10'	25

Description: Trim-Tex Hideaway Expansion is designed to allow for a full $\frac{3}{8}$ " in controlled wall movement.

Advantages: Made from rust proof, dent resistant PVC to reduce jobsite and handling damage. Does not contain cellulose, a potential food source for mold.

Limitations: Product is designed for interior use.

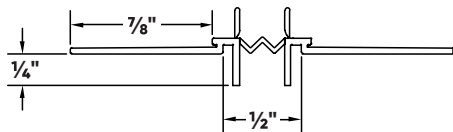
Applicable Standards: Rigid PVC products made by Trim-Tex meet ASTM specifications D3678, D1784, C1047 and achieve a Class A rating for flame spread and smoke developed when tested under ASTM E84.

Surface Characteristics: Trim-Tex products are made from PVC. PVC does not support combustion and is self-extinguishing when the source of flame or heat is removed.

Installation: Trim-Tex recommends following established acceptable industry standard installation methods. Detailed installation instructions can be found at www.trim-tex.com.

Finishing: Always use a high quality paint.

Accessories: 847 Spray Adhesive and Safety Products distributed by Trim-Tex.



Job Name _____

Contractor _____

Date _____

Approvals (Signatures or Stamps)