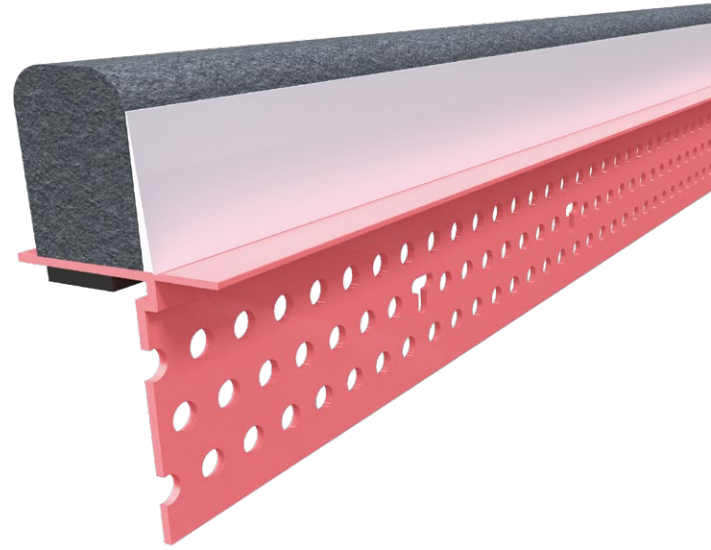


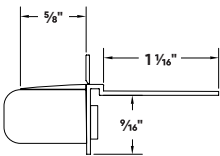
Hotrod® XL

Hotrod XL is a powerful and versatile fire rated drywall accessory, built to slam the brakes on the passage of smoke, fire and sound. This solution combines Trim-Tex's Flat Deflection Bead with compressible foam and intumescent tape for a perfect seal along head-of-wall joints, providing a full $\frac{3}{4}$ " of building movement.



Installation Guide

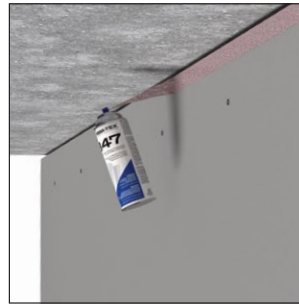
Technical Specs



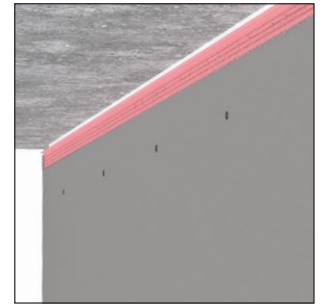
Scan Below for
Installation Video



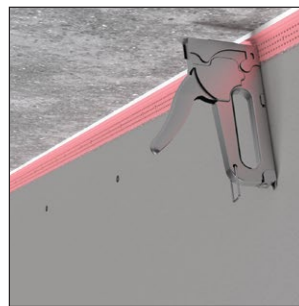
Step 1:



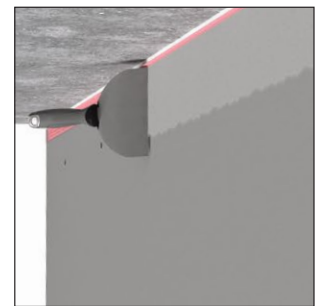
Step 2:



Step 3:



Step 4:



Before Installation:

Install drywall and leave a $\frac{3}{4}$ " gap between ceiling/adjacent structure and drywall. Measure, cut and dry fit the bead.

Step 1:

Coat both the bead and edge of drywall with Trim-Tex 847 Spray Adhesive.

Step 2:

Angle the foam into the gap and press mud leg against wall while ensuring that the flexible gasket is touching the ceiling/adjacent structure and is slightly compressed. Do not over-compress the flexible gasket or compressible foam.

Step 3:

Staple every 6"-8" using $\frac{1}{2}$ " staples.

Step 4:

Finish with drywall compound. Remove tear-off strips prior to sanding.

Note:

- To keep the drywall gap consistent, use an appropriately sized spacer on top of drywall.
- There should be no gaps left in joints between pieces. Additional sealant may be used at butt joint to ensure seamless joints.