

SD-6000

SECURITY DOORS

Heavy Security Access Door

Application

- Installation ideal for prisons, correctional facilities, housing projects etc.
- Heavy duty access door designed for use in high security areas

Product Features

- 10 Gauge Door
- Security butt hinges are surface welded to the door and frame
- A detention type deadbolt lock with paracentric key is standard

SD-6000 Access Door Specifications:

Door / Door Frame: Door 10 gauge (.134) plate & frame is 2x2x3/16 angle, flush to edge of frame. Mounting frame to have anchor straps

Hinge: Heavy duty butt hinges, welded to door and frame

Standard Latch: Detention type deadbolt lock with paracentric key

Optional Latches/Locks: Tamperproof security cam latches, cylinder lock and key. When master keying is required, doors can be prepared for rim or mortise cylinder locks

Finish: Baked White Prime Coat

(Additional finish paint is recommended for superior corrosion resistance)



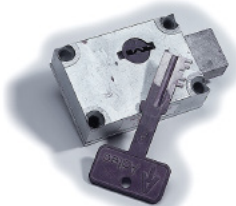
SD-6000 STANDARD SIZES

(other sizes available upon request)

Nominal Door Size W&H		Weight per Door	
inches	mm	lbs.	kg.
12 x 12	305 x 305	23	10.3
16 x 16	406 x 406	30	13.7
18 x 18	457 x 457	34	15.6
24 x 24	610 x 610	49	22.3
24 x 36	610 x 914	65	29.5
36 x 36	914 x 914	87	39.4

Wall or ceiling opening is W + 3/8" (9 mm)

For detailed specifications see submittal sheet



Detention Lock with
Paracentric Key

